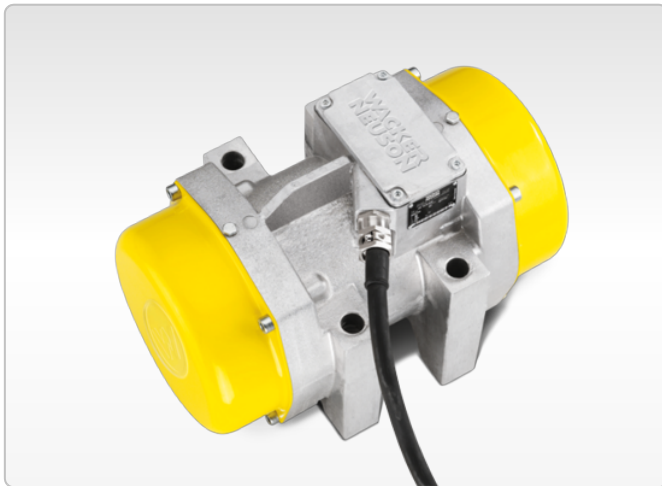


AR 75

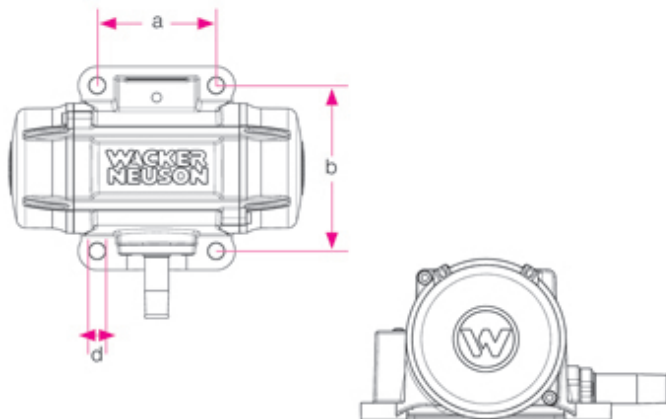
Loosening, separating, transporting: 1,500 - 3,000 1/min.



The specialist for sifting technology: AR 75

Primarily external vibrators with slow speeds are utilized in sifting technology. The AR 75 for example. Its sustained performance ensures that the materials are moving constantly and are sifted continuously and thoroughly.

- Long staying power thanks to its powerful electric motor with stable speeds.
- Excellent power-to-weight ratio.
- Finely adjustable centrifugal forces via adjustable eccentric weight discs.
- Vibration resistant design
- Fastened with a flange



	d mm	a mm	b mm
AR/ARFU 26			
AR 36	11	90	125
AR 43			
AR 53	18	90	154
AR 34			
AR 54	17,5	120	120
AR 64			
AR 75	17	95	180



Technical specifications

	AR 75/1.5/400	AR 75/3/230 v**	AR 75/3/400
Vibrations rpm	1.500	3.000	3.000
Centrifugal force max. kN	10,29	24,12	25,23
Rated voltage 3~ V	400	400	400
Rated current A	3,4	3,8	2,4
Weight kg	36,5	30,5	33
Fastening	95 x 180	95 x 180	95 x 180

* This external vibrator has a varying voltage from 200 to 400 volt. Only the lower voltage and power info is provided in the data table below. At 400 V the rated current is at 2.4 A. ** The external vibrator has a variable speed from 0 - 5,220 rpm.

Please note

that product availability can vary from country to country. It is possible that information / products may not be available in your country. More detailed information on engine power can be found in the operator's manual; the stated power may vary due to specific operating conditions.

Subject to alterations and errors excepted. Applicable also to illustrations.

Copyright © 2014 Wacker Neuson SE.