

Zero Tail Excavator  
2.7 – 4.5 t operating weight



**WACKER  
NEUSON**



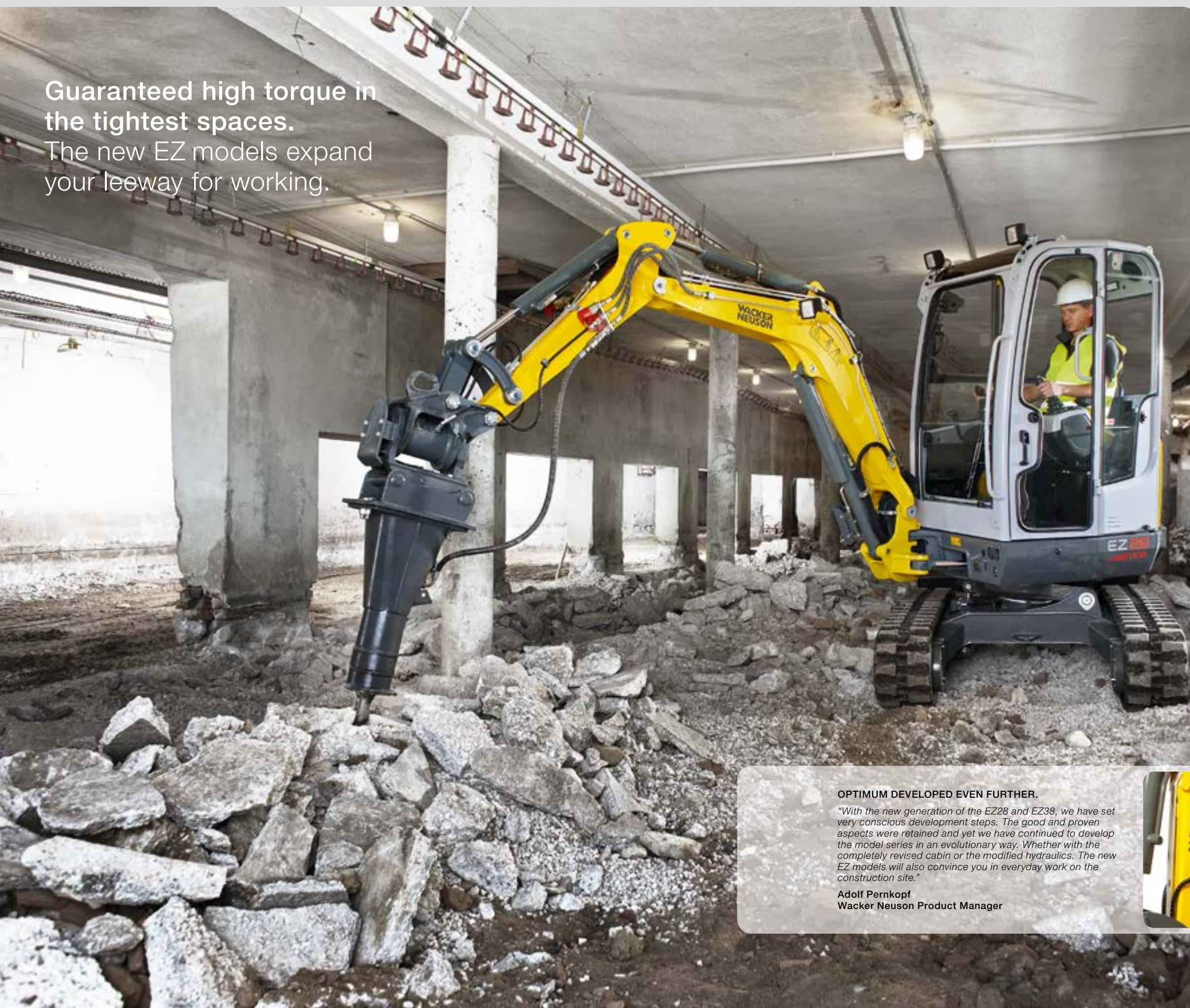
**The most versatile machines in  
the Zero Tail range.**

The new Wacker Neuson EZ28 and EZ38.



Guaranteed high torque in  
the tightest spaces.

The new EZ models expand  
your leeway for working.



**OPTIMUM DEVELOPED EVEN FURTHER.**

*"With the new generation of the EZ28 and EZ38, we have set very conscious development steps. The good and proven aspects were retained and yet we have continued to develop the model series in an evolutionary way. Whether with the completely revised cabin or the modified hydraulics. The new EZ models will also convince you in everyday work on the construction site."*

**Adolf Pernkopf**  
Wacker Neuson Product Manager





Efficiency that catches the eye immediately and an extremely high level of practicality for many years.

# EZ28 EZ38

**Cabin and canopy – innovative and redesigned.** Both impress with an ergonomic design for more comfort, precision and productivity. The canopy version is optionally available with a rear window. This provides additional protection in all weather conditions.

**Large volume diesel engine and efficient hydraulics system.** This permits working at full load in surrounding temperatures of up to 45 °C. A generally lower temperature level in the entire hydraulics system ensures a longer useful life of the components.

**Compactness made practice-oriented.** The compact dimensions and the robust Zero Tail design make the new EZ models extremely maneuverable and compact machines with long, useful lives.

**Always cuts a good figure.** An X-shaped chassis frame made of high tensile strength steel and a perfectly balanced structure combine for the highest level of stability in the EZ models.



**You are equipped right, regardless of what you have planned for the future.** With the modified hydraulics, an additional section for the control circuits II/III is installed by default. This allows for easier retro-fitting of the auxiliary control circuits and makes the machine even more flexible.

**Maximum connection options with up to 3 auxiliary control circuits.** Because you simply want to be equipped for any task.

**Double action additional hydraulics as standard equipment.** This expands the range of applications of the Zero Tail machines.

**Easy Lock – hydraulic quick-hitch system.** Ready for any new task within 30 seconds.

**Different attachments.** Because flexibility makes for a more efficient work performance.

**Optional Vertical Digging System, VDS for short.** Because this option saves up to 25 % work expended.





# EZ28

# EZ38

Tight spaces are entirely their profession. This makes the EZ models so popular on many construction sites.

When the streets become narrower, the cities tighter, the completion dates shorter and the economic efficiency more important, then the new EZ models make their big appearance: No tail swing and extreme maneuverability are the attributes that will also convince you of the EZ28 and EZ38. The Zero Tail concept of the machines increases stability and minimizes the risk of damage.



2



**Optimized for road and highway construction:** The Zero Tail concept without fantail makes the EZ models optimal machines for road and highway construction, as well as urban construction sites; because less work surface is required and must be blocked off.

**1 Up to 15 % more stability with only 50 mm fantail.**

The easy to attach additional counter weights, made of solid cast steel with an additional 115 kg for the EZ28 and 150 kg for the EZ38, give the EZ models additional stability.

**2 Limitless flexibility.**

Good stability, the highest flexibility and reliable performance in the smallest space tremendously broaden the working leeway with the new EZ models.



1

zero tail



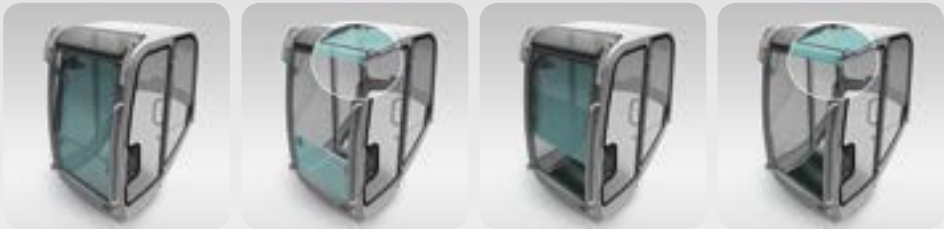
# EZ28

Optimized around the outside to the tightest work assignments. A comfortable working area and a real space saver inside.

Those who work many hours in a day deserve a well-designed and individually customized workplace. In this sense, the refined and completely redesigned interior of the cabin of the EZ model sets new standards in clarity, safety and operating comfort. Fatigue-free and focused work is therefore finally a reality.



1



**Innovatively open in everyday work.** The innovative opening system for the front window makes ventilating the cabin and communicating with the driver easier. Separate removal and storage of the window is therefore a thing of the past.



2



3

**Everything is perfectly within reach.** The modular control lever supports allow for a completely new operating concept with maximum clarity and safety as well as for individual adaptation to customer wishes. Everything is within reach here and is clearly arranged through the perfect integration of the switch panel, display element, proportional control, throttle lever, adjustable arm rests and dozer blade lever.

### 1 Set your operating speed with a turn.

This is possible through the new continuous proportional control for the auxiliary control circuits during operation. This provides individual control of the response behavior and the speed of the attachments.

### 2 Everything is where you need it.

The innovative and ergonomic interior design of the new EZ models sets new standards in clarity, safety, space and operating comfort.

### 3 Sensitive control and more legroom.

This is only available at Wacker Neuson: hydraulically pilot-operated accelerator pedals that provide for new precision in machine control. More added comfort: The flat spacious footwell of the EZ38 can also be extended through fold-down accelerator pedals.





# EZ28

Every day we offer what others only promise in theory. Practical flexibility and function built for the job site.

Extreme functionality is the requirement in daily use for maximum productivity, which is why we have built the EZ model with a focus on practical application so that you can always do an efficient job. Be it in quick transport from A to B, simply lifting the machine or demounting the canopy. With the Zero Tail machines from Wacker Neuson, you are opting for more performance on tough job site works.



1



**To a new site of application in no time.** Thanks to less than 2.7 tons of shipping weight, including the cabin, it is possible to transport the EZ28 on a car trailer. This quickly opens up new possibilities for application, reduces costs and increases the operational range to a maximum.

## 1 Simple demounting for extremely low passageway heights.

The cabin and canopy can be demounted easily with just 4 screws while all machine functions remain preserved. These are mounted back on in no time at the place of application.

## 2 The tiltable cabin of the EZ38 accelerates maintenance.

The simple tilting of the EZ38 cab clears the way to all underlying components. In addition, the side panels are easy to remove. Necessary service work can be carried out on site, easily and in a time and money-saving manner.



2



# EZ28

Those who know everyday life on the construction site like the back of their hand know what is important with maintenance: Simplicity.

The EZ models set new standards in terms of being practice-oriented and easy to service. All maintenance components, such as fuel, air, oil and hydraulic oil filters of the water and hydraulic coolers are easily accessible. The reason for this is the laterally placed engine. Maintenance and service are therefore a breeze. Because what is also true on the construction site: Time is money.



**Simple demounting for quick access.**  
The two chassis covers on the side can be easily demounted by means of a wrench and enable easy access to the chassis components.

1



**1 Open the lid for fast service.**

The engine hood of the EZ models guarantees easy maintenance access for all filter elements and basic service work.

**2 Optimally sized radiators.**

The all-metal radiator as well as the generously dimensioned hydraulic cooler are easy to access. The wide-meshed and very sturdy radiator lamella provide for easy and fast cleaning. This extremely robust design additionally minimizes the risk of damages.

2





# The craziest ideas sometimes bring about the most efficient solutions.

Preliminary work is expensive and you often have no time for difficult manoeuvres. Nevertheless, get a 25 % performance advantage out of every challenge. As the only manufacturer in the compact excavator segment, Wacker Neuson has been offering the revolving superstructure tilting function for over 20 years. Even with the EZ models, the Vertical Digging System is optionally available in all models. It sounds strange, but it's true!

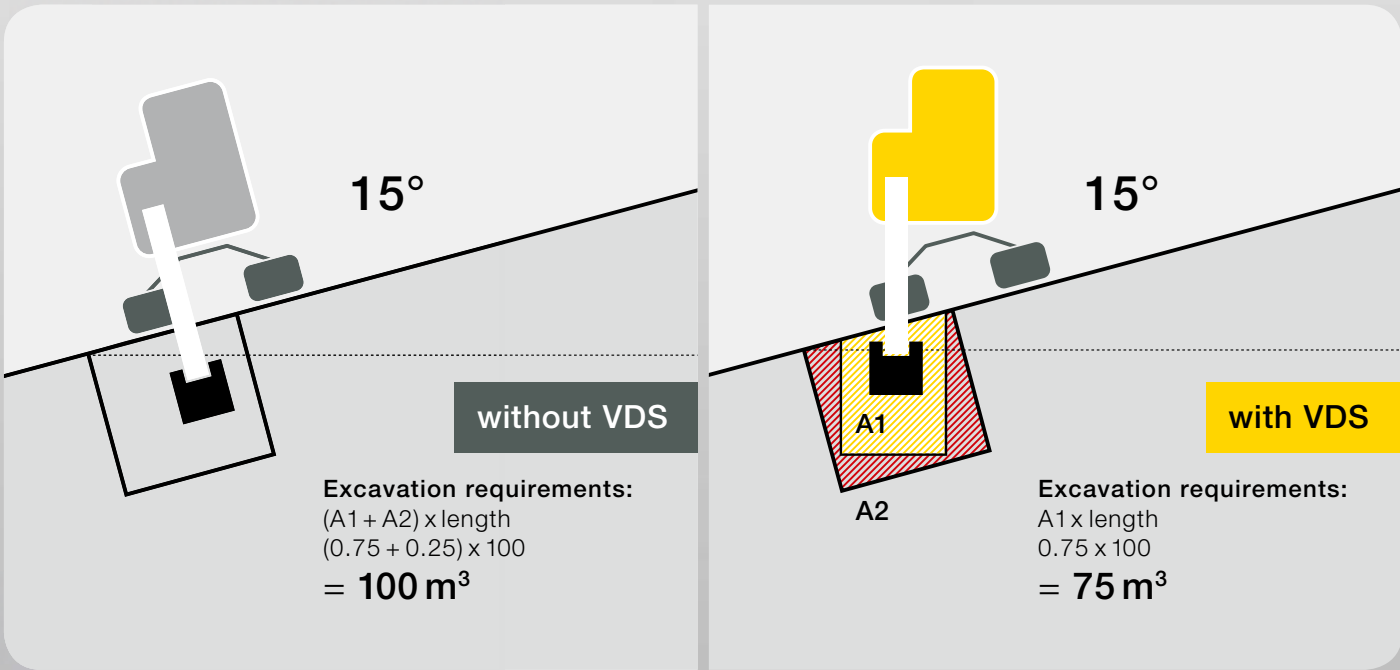
## Vertical digging simply made efficient.

Save up to 25 % effort: With the continuously variable tilting of the superstructure up to 15°, you can compensate for gradients of up to 27 %. This means shorter excavation times due to exact vertical excavation.

- Improved productivity and efficiency.
- Up to 25 % material and time savings when excavating and filling.
- Up to 20 % increased stability at 15° tilt and full load.
- 360° swiveling performance.
- Upright sitting position, making it easier and more comfortable to operate.
- Simple and robust design.



25%  
MATERIAL AND  
TIME SAVINGS  
*when excavating  
and filling.*



**Basis of calculation:**  
 Standard trench (as per Austrian standard 1610) H 1.25 m, W 0.6 m, L 100 m. At 15° gradient.





Those who focus on efficiency have to keep an eye on their construction machines. Wacker Neuson Telematic makes this possible.

6003 - 1969459  
5023 - 5522477  
5023 - 9008374

6003s - 2070331

- Stop
- Speed > 15 km/h
- Activity
- GPS position > 2 hours unchanged



**Experienced fleet managers know: Keeping oversight of deployments, operating hours and the condition of all construction machines borders on logistical utopia.**

To date, you simply had to rely on the optimal use of construction machines on site or accept potential downtimes. Play it safe with the Telematic GPS technology, with which the new EZ models can also be equipped. You can rely 100 % on the figures and data, GPS positions and daily reports.

**You decide where your machines are used:**

Geofence works like a virtual fence that allows you to isolate an area of your machines' deployment on a completely individual basis. If the machine leaves these premises, the system alerts you immediately.

**Reduce the risk of machine theft.**

Especially at night or on weekends, you should know the exact whereabouts of your machine. You will receive an SMS or an email when the machine leaves the defined Geofence area.

Regardless of how versatile your tasks are, you will master them easily.

The new EZ28 and EZ38 models make work easier all round. You have the choice of different preparations and a complete hydraulic quick-hitch system. EASY LOCK can also be combined perfectly with Powertilt. Get more out of your machine – completely efficiently and easily.

- Hydraulics and hydraulic quick-hitch system EASY LOCK as well as attachments are matched 100 %.
- Deliverable ex-works – no cost-intensive and laborious conversion work required.
- Higher machine productivity.
- Switch from one attachment to another in less than 30 seconds without the driver having to leave his cab.
- Reduced time and manpower needs.



easylock

**Smart in use as backhoe and face shovel.** With a simple turn, the bucket can also be used as a face shovel. This not only saves time, but also makes the excavator even more versatile in an astute way.

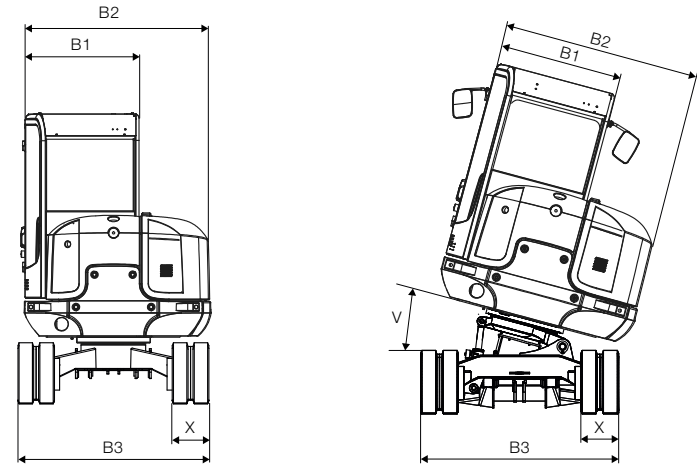
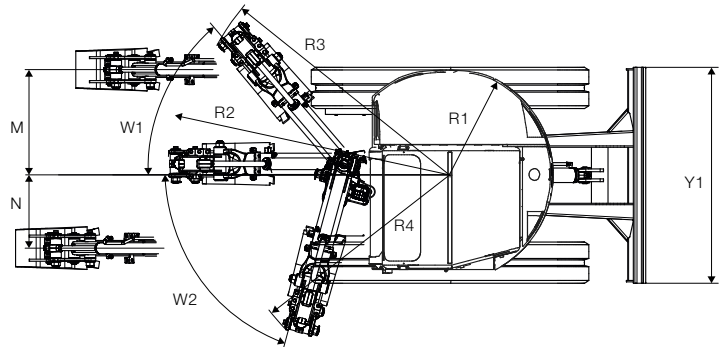
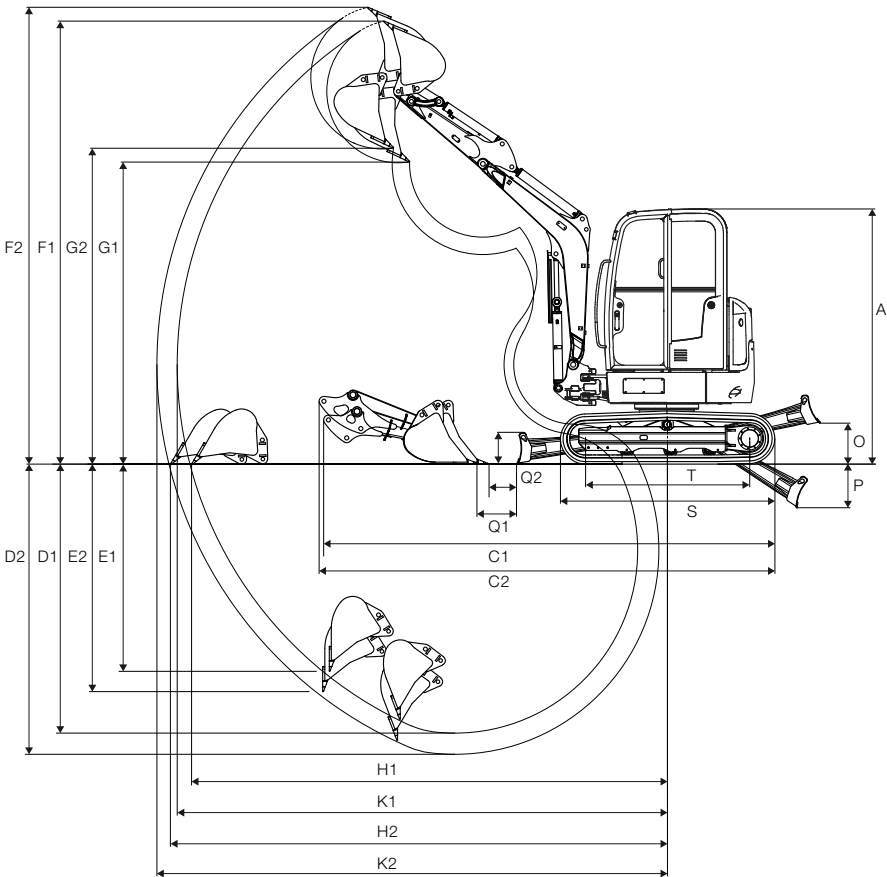




Technical data.

DIMENSIONS	
A	Height mm
B1	Width of the cabin mm
B2	Width of the revolving superstructure mm
B3	Width of the undercarriage mm
C1	Transport length (short dipper arm) mm
C2	Transport length (long dipper arm) mm
D1	Max. digging depth (short dipper arm) mm
D2	Max. digging depth (long dipper arm) mm
E1	Max. vertical recess depth (short dipper arm) mm
E2	Max. vertical recess depth (long dipper arm) mm
T1	Max. recess height (short dipper arm) mm
T2	Max. recess height (long dipper arm) mm
G1	Max. dumping height (short dipper arm) mm
G2	Max. dumping height (long dipper arm) mm
H1	Max. ground coverage (short dipper arm) mm
H2	Max. ground coverage (long dipper arm) mm
K1	Max. digging radius (short dipper arm) mm
K2	Max. digging radius (long dipper arm) mm
M	Max. boom offset to center of bucket, right side mm
N	Max. boom offset to center of bucket, left side mm
O	Max. lifting height of dozer blade above subgrade mm
P	Max. scraping depth of the dozer blade below subgrade mm
Q1	Clearance of bucket dozer blade (short dipper arm) mm
Q2	Clearance of bucket dozer blade (long dipper arm) mm
R1	Min. tail swing radius mm
R2	Boom swing radius, center mm
R3	Boom swing radius, right mm
R4	Boom swing radius, left mm
S	Total traveling gear length mm
T	Traveling gear length of the sprocket guide wheel mm
V	VDS tilt angle °
W1	Max. swing angle of the arm system to the right °
W2	Max. swing angle of the arm system to the left °
X	Chain width mm
Y1	Dozer blade width mm
Z	Dozer blade height mm

EZ28	EZ28 VDS	EZ38	EZ38 VDS
2,405	2,525	2,500	2,570
980	980	990	990
1,340	1,340	1,600	1,600
1,570	1,570	1,740	1,740
4,270	4,270	4,800	4,750
4,290	4,290	4,825	4,790
2,540	2,420	3,110	3,040
2,740	2,620	3,360	3,290
1,960	1,845	2,385	2,310
2,150	2,035	2,625	2,550
4,180	4,300	4,530	4,600
4,310	4,430	4,660	4,730
2,850	2,960	3,320	3,390
2,980	3,090	3,445	3,520
4,490	4,445	5,190	5,135
4,690	4,645	5,430	5,350
4,630	4,630	5,300	5,300
4,820	4,820	5,535	5,535
765	765	740	740
535	535	590	590
390	390	380	380
410	410	460	460
360	360	260	240
265	265	120	100
760	760	870	870
2,080	2,080	2,380	2,380
1,960	1,960	2,220	2,220
1,660	1,660	1,985	1,985
2,020	2,020	2,060	2,060
1,550	1,550	1,605	1,605
–	15	–	15
50	50	55	55
75	75	70	70
300	300	300	300
1,570	1,570	1,740	1,740
300	300	355	355



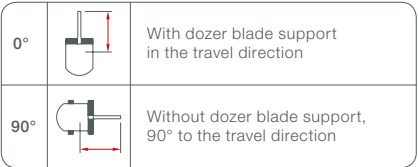


Technical data.

GENERAL		
Transport weight kg	2,575–3,230	3,580–4,340
Operating weight kg	2,735–3,390	3,755–4,515
ENGINE		
Model	Yanmar	Yanmar
Type	3TNV76	3TNV88
Model	Liquid-cooled, 3-cylinder diesel engine	
Displacement cm³	1,115	1,642
Nominal speed rpm	2,500	2,400
Engine output according to ISO kW	15.2	21
Battery voltage V/Ah	12/44	12/71
HYDRAULICS		
Pumps	Double variable and double gear pump	
Max. flow rate l/min	2x30.5+21.2+7.2	2x40+26.3+11.3
Operating pressure for working and driving hydraulics bar	225	240
Operating pressure for slewing gear bar	206	210
Hydraulic fluid cooler	Standard	Standard
Superstructure slewing speed rpm	10.25	8.8
Max. shearing force of short/long dipper arm kN	16.6/14.5	23.3/20.5
Max. breakout forces kN	27.6	35.2
TRAVERSING GEAR		
Track width mm	300	300
Ground pressure kg/cm²	0.27	0.34
Number of track rollers pcs.	3	4
Ground clearance mm	277	280
Drive speed km/h	2.1/3.8	2.8/4.6
Max. gradeability °	30	30
DOZER BLADE		
Width x Height mm	1,570x290	1,740x345
Travel above / below subgrade mm	380/419	390/450
CAPACITIES		
System filling with hydraulic oil l	26.5	38.5
Fuel tank l	35.2	44
NOISE EMISSIONS		
Noise level (L <sub>WA</sub> ) dBA as per 2000/14/EC	93	95
Sound pressure level (L <sub>WA</sub> ) dBA as per ISO 6394	–	77

Technical data.

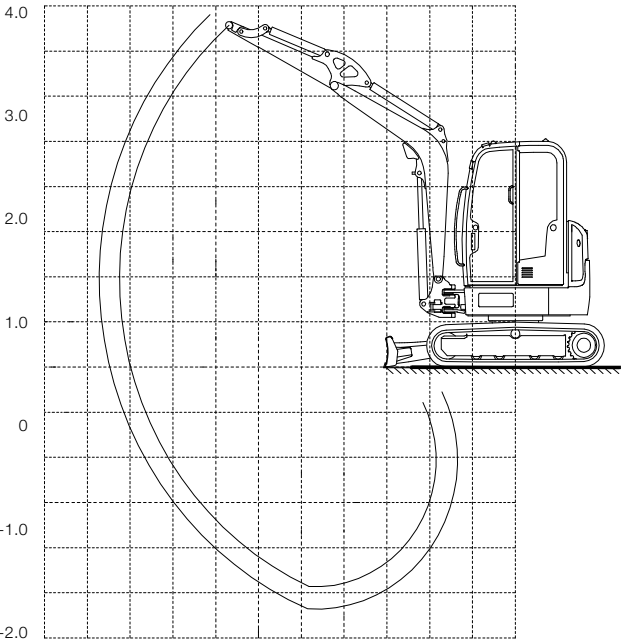
LIFTING FORCE OF EZ28 SHORT / LONG DIPPER ARM								
B	max		3.5 m		3.0 m		2.5 m	
	A 0°	90°	0°	90°	0°	90°	0°	90°
3.0 m	508* / 458*	387 / 377	–	–	492* / 423*	426 / 423*	–	–
2.0 m	489* / 447*	280 / 292	492* / 450 *	319 / 367	525* / 473*	414 / 473*	588* / –	559 / –
1.0 m	494* / 453*	249 / 266	554* / 526*	301 / 346	663* / 625*	380 / 437	872* / 811*	495 / 573
0.0 m	504* / 465*	257 / 276	581* / 575*	287 / 329	731* / 720*	357 / 409	967* / 960*	463 / 531
-1.0 m	498* / 468*	324 / 343	–	–	605* / 646*	359 / 406	805* / 852*	467 / 529
LIFTING FORCE OF EZ38 SHORT / LONG DIPPER ARM								
B	max		4.5 m		3.5 m		2.5 m	
	A 0°	90°	0°	90°	0°	90°	0°	90°
3.0 m	–	–	–	–	660* / –	660* / –	–	–
2.0 m	–	–	790* / 705*	425 / 475	785* / 670*	640 / 670*	–	–
1.0 m	825* / 755*	395 / 405	840* / 790*	410 / 460	1,050* / 965*	600 / 670	1,735* / 1,520*	975 / 1,095
0.0 m	805* / 750*	385 / 400	855* / 845*	400 / 445	1,210* / 1,170*	570 / 635	2,025* / 1,975*	925 / 1,020
-1.0 m	–	–	–	–	1,160* / 1,175*	565 / 620	1,875* / 1,920*	915 / 1,005
-2.0 m	–	–	–	–	–	–	1,440* / 1,570*	945 / 1,025



- A Projection from turnstile center
- B Load fixing height from ground level

\* Lifting force is hydraulically restricted.

All table values are given in kg, in a horizontal position on a solid surface, without bucket and in telescopic extension of the transport gear (maximum transport gear width). If a bucket or other device is attached, the lifting power or lifting load is reduced by its own tare weight. Base of calculation: according to ISO 10567. The lifting force of the compact excavator is limited by the settings of the pressure relief valve and the tilt safety mechanism. Neither 75 % of the static lifting load nor 87 % of the hydraulic lifting power are exceeded.





STANDARD EQUIPMENT	
General	Rubber track 300mm Dozer blade Working light mounted to the boom Tool set, including grease press and operator’s manual
Engine	Water-cooled Yanmar diesel engine
Canopy	Canopy meets the current ROPS, FOPS* and TOPS regulations Adjustable driver seat with imitation leather cover and roll-up safety belt
Hydraulics	Summation regulation Hydraulic servo control with joystick control Valve control according to ISO, DIN, SAE, PCSA and EURO Auxiliary hydraulic connections on the dipper arm for two travel directions Hydraulically dampened drive pedals and forward and reverse travel lever Hydraulic oil cooler Enlarged, unpressurized return line for various attachments Parking brake for turn motor <b>EZ28:</b> 2 travel speeds <b>EZ38:</b> Automatic 2-speed transmission, 2 travel speeds automatically switched, 1st gear manually lockable
OPTIONS	
Cab	Glazed safety cab: Cab heating, top front window swings back, bottom window removable, window wiper/washer system, fully-lined cab interior. Removable cab that meets the current ROPS, TOPS and FOPS* regulations. Canopy with rear screen Radio <b>EZ38:</b> Air conditioning
Hydraulics	3rd proportional-controlled control circuit Bio oil Panolin BP-Biohyd SE46 Flat-faced couplers Proportional steering for auxiliary hydraulics Grabber control circuit Pressure relief valve for auxiliary hydraulics Basic overload warning device Advanced overload warning device Hydraulic quick-hitch system (Easy Lock) Powertilt setup
Paint	Special paint 1 RAL, yellow parts only Special paint 1 no RAL, yellow parts only Special paint for cabin/canopy RAL, only RAL colour available
Miscellaneous	Vertical Digging System (VDS) Dome light Automatic RPM speed control Drive signal Additional counter weight <b>EZ28:</b> 115 kg <b>EZ38:</b> 150 kg Long dipper arm <b>EZ28:</b> + 200 mm <b>EZ38:</b> + 250 mm KAT drive interlock <b>EZ38:</b> Diesel fuelling pump
Packs	Security 24 P (2000) Security 24 PH (2000) Security 24 C (2000) Security 36 P (3000) Security 36 PH (3000) Security 36 C (3000) Mirror pack, mirror right and left side
Assembled attachments	EASY LOCK EASY LOCK with Powertilt
Attachments	Various mounted buckets Hydraulic breakers

\* FOPS (Level I or II) only available with additional protection grill – optionally ex-factory or as retrofitting set.

# Model overview.

## COMPACT EXCAVATOR

up to 1t	803
1–2t	1404, EZ17, ET18, ET20
2–3t	ET24, 2503, EZ28
3–4t	3503, EZ38
4–5t	50Z3
5–6t	6003
6–8t	75Z3, 8003
12–14t	14504



## MOBILE EXCAVATOR

up to 6t	6503
8–11 t	9503



## WHEEL DUMPER

up to 2t	1001, 1501, 1601
2–5t	2001, 3001, 4001, 5001
6–9t	6001, 9001
over 9t	10001



## TRACK DUMPER

0.5t	DT05
0.8t	DT08, DT08 proline
1.2t	DT12
1.5t	DT15
2.5t	DT25



## SKIDSTEER LOADER

443–567 kg	501s
613–726 kg	701s, 701sp
795–908 kg	901s, 901sp
1,035–1,170 kg	1101c, 1101cp







**WACKER NEUSON PLANT, LINZ: MADE IN AUSTRIA, IN DEMAND WORLDWIDE.**

The factory in Linz (Austria) is the development and production site for compact excavators, mobile excavators, compact loaders (SSL), wheel dumpers and track dumpers. So many innovations that have made their triumphant way around the world started out right here.

**PRODUCTION LOCATIONS OF THE WACKER NEUSON GROUP**

- 1 Milwaukee, USA
- 2 Norton Shores, USA
- 3 Korbach, Germany
- 4 Pfullendorf, Germany
- 5 Reichertshofen, Germany
- 6 Linz, Austria
- 7 Kragujevac, Serbia
- 8 Manila, The Philippines



1



2



3



4



5



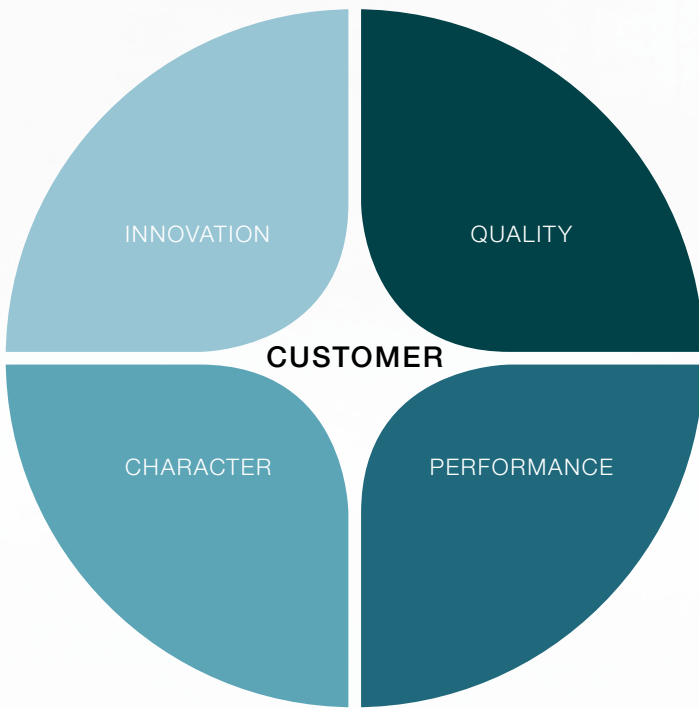
6



7



8



**The value wheel of Wacker Neuson: Customer success is at our centre.**

Our winning formula stems from the values of a medium-sized family company that is listed on the stock exchange, with the strengths and competence of a globally active organisation, and with people who live out our credo day in, day out, full of vitality and bright ideas.

Quality, innovation, performance and character are what we believe in. That, and the lasting success of our customers, around whom everything ultimately revolves.







**WACKER  
NEUSON**



[www.wackerneuson.com](http://www.wackerneuson.com)